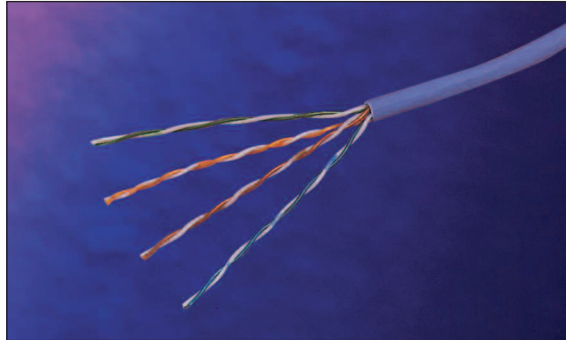


Excel Category 6 Unshielded Twisted Pair (UTP) Cable - LSOH



25 Year System Warranty

Category 6 Compliant

- TIA/EIA 568-B.2-1
- EN50173-1
- ISO/IEC 11801

EC Verified

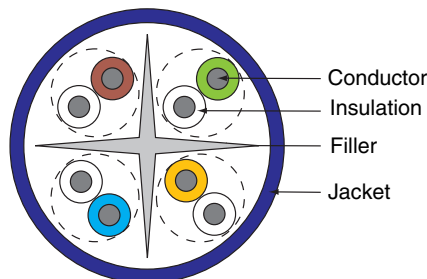
Features

- Category 6 compliant
- LSOH outer sheath
- Central 'X' filler
- Backward Compatible
- 23AWG conductor
- Fast Feed Reelex Packaging
- '305-0' metre marked
- 25 year system warranty
- BSRIA Number 1 private label, by market share for the last three years

Product Overview

Excel Category 6 UTP cables are manufactured and tested to the TIA/EIA 568-B.2-1, EN50173-1 and ISO/IEC 11801 Category 6 specifications. Each cable consists of 8 colour coded 23AWG polyethylene insulated conductors. These are twisted together to form 4 pairs with varying lay lengths. These pairs are then formed around a central 'X' shaped polyethylene filler. This filler assists in maintaining and enhancing the cables performance.

The printing detail along the outer sheath includes the cable part code, specification detail and our new 305 to 0 metre marked system. As the cable is dispensed from the box the sequential marking counts down from 305 to 0 metres, as well as reducing waste and accounting easily for cables installed, this innovative print legend finally removes the guesswork from assessing the amount of cable remaining in partly used boxes.



Specification

Overall Diameter	6.3mm
Operation Temperature Range	-10°C to +75°C
Bend Radius	4 x overall diameter installed, 8x installing

Performance Overview

Excel Category 6 cables are manufactured and tested to the Category 6 performance standards defined by the EIA/TIA, ISO and EN standards bodies. A range of performance characteristics are tested up to 250MHz including return loss, attenuation and near and far end crosstalk (NEXT and FEXT) for which both worst case and power sum tests are completed. Actual performance far exceeds the required standard – when tested in isolation and in circuit – resulting in significant headroom for even the most demanding of applications.

As well as providing link and channel compliance with the aforementioned specification – when installed with Excel category 6 components – the cable is also backward compatible with Category 5 and 5e components.

Performance / Specification Table

Frequency (MHz)	Return loss (dB)	Attenuation (dB/100m)	NEXT (dB)	PSNEXT (dB)	FLEXT (dB/100m)	PSELFEXT (dB/100m)	Delay (ns/100m)
1	20.0	2.0	66.0	64.0	67.8	64.8	570.0
4	23.0	3.8	65.3	63.3	55.8	52.8	552.0
10	25.0	6.0	59.3	57.3	47.8	44.8	545.4
16	25.0	7.6	56.2	54.2	43.7	40.7	543.0
20	25.0	8.5	54.8	52.8	41.8	38.8	542.0
31.25	23.6	10.7	51.9	49.9	37.9	34.9	540.4
62.5	21.5	15.4	47.4	45.4	31.9	28.9	538.6
100	20.1	19.8	44.3	42.3	27.8	24.8	537.6
150	18.8	24.7	41.7	39.7	24.3	21.3	536.9
200	18.0	29.0	39.8	37.8	21.8	18.8	536.5
250	17.3	32.8	38.3	36.3	19.8	16.8	536.3

Nominal velocity of propagation (NVP 67%)

System Warranty

When installed with Excel Category 6 cables and components by an accredited Excel Cabling Partner, this product is supported by a comprehensive 25 year product and applications warranty. This warranty assures not just standard compliance but also backward compatibility with Category 5 and 5e cables and components.

Typical Applications

- 100 Base-TX
- 1000 Base-TX Gigabit Ethernet
- Composite Video
- Token Ring
- 155 Mbps ATM
- 622 Mbps ATM

Part Number Information

Part No.	Description
100-071	Excel Category 6 Cable Violet LSOH, 305mtr Fast Feed Box

EC verified. This product has been tested by the Delta EC Cabling Group and complies with the following standards - ISO/IEC 11801:2002 2nd edition, IEC 61156-5:2002, en50173-1:2007 and ANSI/EIA/TIA-568-b.2-1. For copies of test certification please contact your local Excel distributor, or visit www.excel-networking.com or www.delta.dk.



Excel is a complete, end-to-end networking solution, offering exceptional performance and support, manufactured to European quality standards and covered by one warranty.

Contact us at sales@excel-networking.com

WWW.EXCEL-NETWORKING.COM