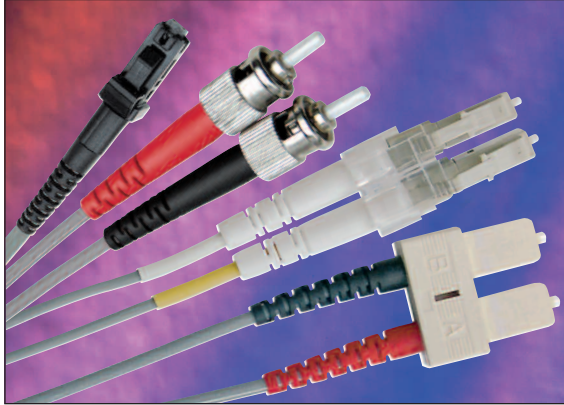


EXCEL

Excel Fibre Optic Duplex Patch Leads – Multimode OM1 62.5/125



25 year warranty

100% Optical Test

Test Certificate with each cable

Batch Number Tracking

Features

- Low smoke zero halogen cable
- Available with grey or orange outer sheath
- 900 or 600 μ m 62.5/125 μ m duplex cable
- Broad range of connectivity options
- High quality connectors
- Each cable is individually bagged and labelled
- Receive and transmit legs clearly indicated
- Factory terminated under ISO9001 quality control procedures

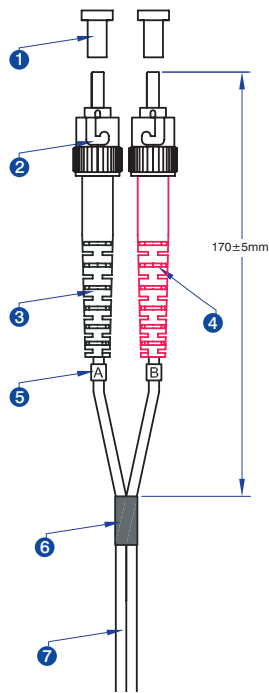
Product Overview

Excel duplex patch leads are manufactured from the highest quality 900 or 600 μ m optical fibre, terminated with ceramic (or in the case of MTRJ cables composite) ferrule connectors of various types. Cable preparation, termination and testing is carried out to strictly managed procedures in an Excel approved manufacturing facility. Applications include the connections between optical patching panels and network or server equipment and directly from devices to the local or wide area network or physical security equipment

Each cable has strain relief boots to prolong and maintain performance levels of the assembly, transmit and receive 'legs' of each duplex cable are identified by means of ring type cable marker fixed to each end the assembly. A short distance from these identification rings heat shrink is applied to maintain an easy to manage bonded two fibre cable, finally a label containing a unique batch number is fixed to the centre of cable for quality and traceability purposes.

Product Schematics

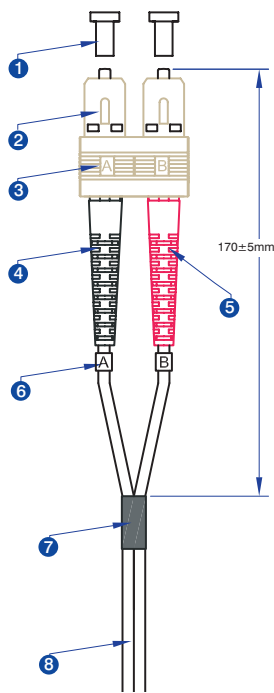
ST



- 1 ST Dust cover
- 2 ST 3.0 multimode connector*
- 3 ST 3.0 Black strain relief boot*
- 4 ST 3.0 Red strain relief boot*
- 5 Identification ring
- 6 Black heatshrink tubing
- 7 3.0mm Duplex OM1 62.5/125 LSOH Grey or Orange cable*

* 2.0 when used in hybrid cables with LC or MTRJ connectors

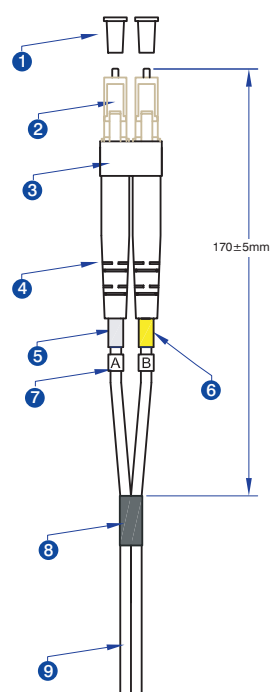
SC



- 1 SC Dust cover
- 2 SC 3.0 Beige multimode connector*
- 3 SC Beige clip
- 4 SC 3.0 Black strain relief boot*
- 5 SC 3.0 Red strain relief boot*
- 6 Identification ring
- 7 Black heatshrink tubing
- 8 3.0mm Duplex OM1 62.5/125 LSOH Grey or Orange cable*

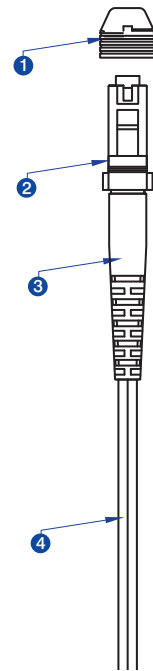
* 2.0 when used in hybrid cables with LC or MTRJ connectors

LC



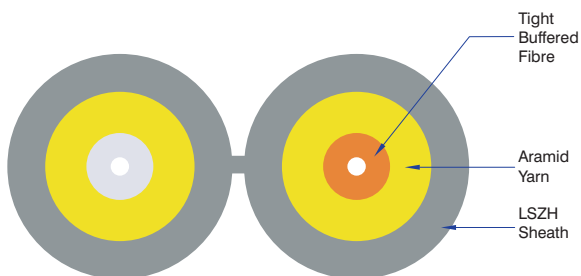
- 1 LC Dust cover
- 2 LC 2.0 multimode simplex Beige connector
- 3 LC Beige clip
- 4 LC 2.0 white boot
- 5 White heatshrink tubing
- 6 Yellow heatshrink tubing
- 7 Identification ring
- 8 Black heatshrink tubing
- 9 2.0mm Duplex OM1 62.5/125 LSOH Grey or Orange cable

MTRJ



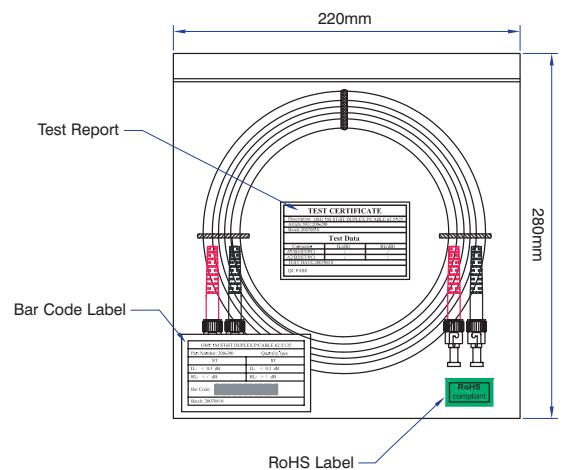
- 1 MTRJ dust cover
- 2 MTRJ 1.8 multimode Black Beige connector
- 3 MTRJ 1.8 Black strain relief boot
- 4 1.8mm Duplex OM1 62.5/125 LSOH Grey or Orange cable

Cable Profile



Available with grey or orange outer sheath

Packaging



Performance Characteristics

Connector

Measure	ST Connector	SC Connector	LC Connector	MTRJ Connector
Insertion Loss dB @850nm	< 0.3	< 0.3	< 0.3	<0.5
Ferrule	2.5mm ceramic	2.5mm ceramic	1.25mm ceramic	Composite
Housing	Nickel Brass	Composite	Composite	Composite
Connector Design	IEC60874-10-1997	IEC61754-4	IEC61754-20	IEC61754-18-2001

Cable

Measure	ST Assembly	SC Assembly	LC Assembly	MTRJ Assembly
Attenuation Max dB @850nm	≤ 3.5	≤ 3.5	≤ 3.5	≤ 3.5
Attenuation Max dB @1300nm	≤ 1.5	≤ 1.5	≤ 1.5	≤ 1.5
Bandwidth Min MHz.km @850nm	≥ 200	≥ 200	≥ 200	≥ 200
Bandwidth Min MHz.km @1300nm	≥ 500	≥ 500	≥ 500	≥ 500
No of Fibres	2	2	2	2
Outer Diameter WxH in mm	2.8 x 5.7	2.8 x 5.7	2.0 x 4.1	1.8 x 3.7
Outer sheath colour	Grey or Orange	Grey or Orange	Grey or Orange	Grey or Orange
Outer sheath μm	900	900	900	600
Outer sheath Material	IEC332-1 LSOH	IEC332-1 LSOH	IEC332-1 LSOH	IEC332-1 LSOH
Temperature range °C	-20 to + 70	-20 to + 70	-20 to + 70	-20 to + 70
RoHS Compliant	Yes	Yes	Yes	Yes
Weight kg/km	13.2	13.2	8.2	6.7

Availability

Excel duplex OM1 patch leads are generally available from stock in lengths from 1 to 30 metres. For requirements which may vary from this, such as specific length, colour or labelling requirements, please contact your local Excel distributor. Not all cable types and lengths are available from stock in both grey and orange please check with you nearest sales office for details.